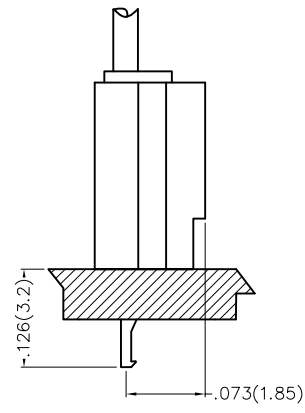
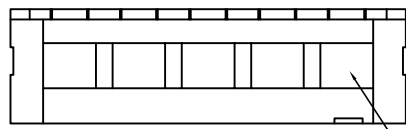
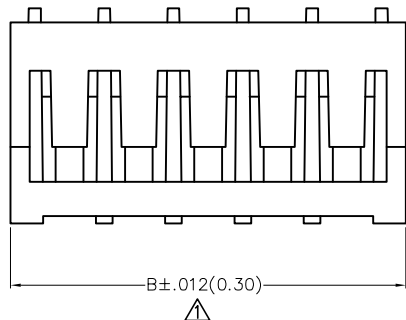
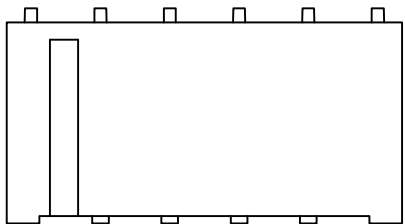
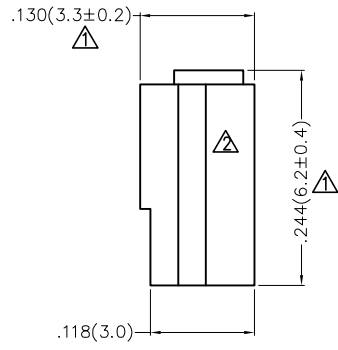
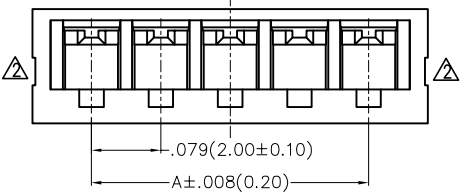


REV	LOCATIONS	DESCRIPTION	DATE	REVISER	APPD
1	△	Size changes	27/APR/21	KATE	JOHNNY
2	△	Structure change	24/OCT/24	MATT	LEO



Electrical
 Temperature Range—Operating: -25°C~+85°C
 Material
 Housing: PA66 (UL 94V-0)
 Applicable Terminal: FT20008

Ordering Information

FHG 200 09 — S XX M 2 W1 B
 1 2 3 4 5 6 7 8 9

1	Category	2	Series Number	3	Distinction No.	4	Row Option		
	FHG—Housing		200—Pitch 2.00mm		09		S—Single Row		
5	Circuits	6	Type	7	Material—Resin	8	Color—Resin	9	Packaging
	XX		M—Male		2—PA66		W1—White		B—PE Bag

Circuits (n)	Part No.	Dimensions(in/mm)		Circuits (n)	Part No.	Dimensions(in/mm)	
		A	B			A	B
2	FHG20009-S02M2W1B	.079(2.00)	.212(5.40)	10	FHG20009-S10M2W1B	.709(18.00)	.843(21.40)
3	FHG20009-S03M2W1B	.157(4.00)	.291(7.40)	11	FHG20009-S11M2W1B	.787(20.00)	.921(23.40)
4	FHG20009-S04M2W1B	.236(6.00)	.370(9.40)	12	FHG20009-S12M2W1B	.866(22.00)	1.00(25.40)
5	FHG20009-S05M2W1B	.315(8.00)	.449(11.40)	13	FHG20009-S13M2W1B	.945(24.00)	1.079(27.40)
6	FHG20009-S06M2W1B	.394(10.00)	.528(13.40)	14	FHG20009-S14M2W1B	1.024(26.00)	1.157(29.40)
7	FHG20009-S07M2W1B	.472(12.00)	.606(15.40)	15	FHG20009-S15M2W1B	1.102(28.00)	1.236(31.40)
8	FHG20009-S08M2W1B	.551(14.00)	.685(17.40)	16	FHG20009-S16M2W1B	1.181(30.00)	1.315(33.40)
9	FHG20009-S09M2W1B	.630(16.00)	.764(19.40)				

 THIRD ANGLE PROJECTION	GENERAL TOLERANCES (UNLESS SPECIFIED)		APPROVE BY	DATE	PART NO.	ITEM NO.	 Building Technology Cornerstone	
	X.±.012(0.30)	X.* ±5°	LEO	15/MAR/23				FHG20009-SXXM2W1B
	X.X±.008(0.20)	X.X* ±2°	CHECKED BY	DATE	TITLE		REV 2	SHEET NO. 1/1
	X.XX±.006(0.15)	X.XX* ±1°	GISELLE	15/MAR/23	Wire to Board Pitch 2.0mm(Housing)			
SCALE	SIZE	X.XXX±.004(0.10)	X.XXX* ±0.5°	DRAWN BY	DATE	THIS DRAWING CONTAINS INFORMATION THAT IS PROPRIETARY TO TXGA INDUSTRIAL ELECTRONICS(S.Z)CO.,LTD AND SHOULD NOT BE USED WITHOUT WRITTEN PERMISSION		
5:1	A4			YYQ	15/MAR/23			